



RADFORD PARK



Living Area: 192.7.sqm | To suit 36m frontage
(including 2 X 5.0m side boundary set backs)



LOCHINVAR 257

The Lochinvar Range of Homes are contemporary homes inspired by the traditional elements ranch style homestead. The design features traditional forms and detailing with a simple contemporary twist, creating an elegant but homely residence.

The generous kitchen and butler's pantry provides ample storage and functionality for large families or for those who like to entertain in style.

Large open plan living areas provide flexibility for residents. Large sliding doors create an inside/outside lifestyle with the alfresco area.

Generous bedrooms, garages and stylish bathroom provides ample storage and flexibility for residents.

The plan including areas of verandas can be easily adjusted to suit your requirements and budget.

The Lochinvar Range of Homes will make a bold, elegant and quality statement to your rural site, heritage site or that dream acreage!

Whether you want the Modern, Chic lines of our Martin Façade. Traditional Elegant styling of our Hunter Façade or the Classic look of our Project Façade the Denman Range will cater to even the most discerning clients.

\$419,145

(HOUSE PRICE ONLY)

INCLUSIONS

- HUNTER Façade (depicted)
- ELEGANCE inclusions UPGRADE
- 2700 high ceilings
- Ducted air conditioning
- Light fitting and ceiling fans
- High quality PC items
- Tiles & Carpet allowance
- Flyscreens for windows & sliding doors
- Clothesline & letterbox
- Fixed Price Contract
- 6 Year structural guarantee
- 2 year non structural guarantee
- 90 day maintenance period
- BASIX & Standard site costs
- And much more.....

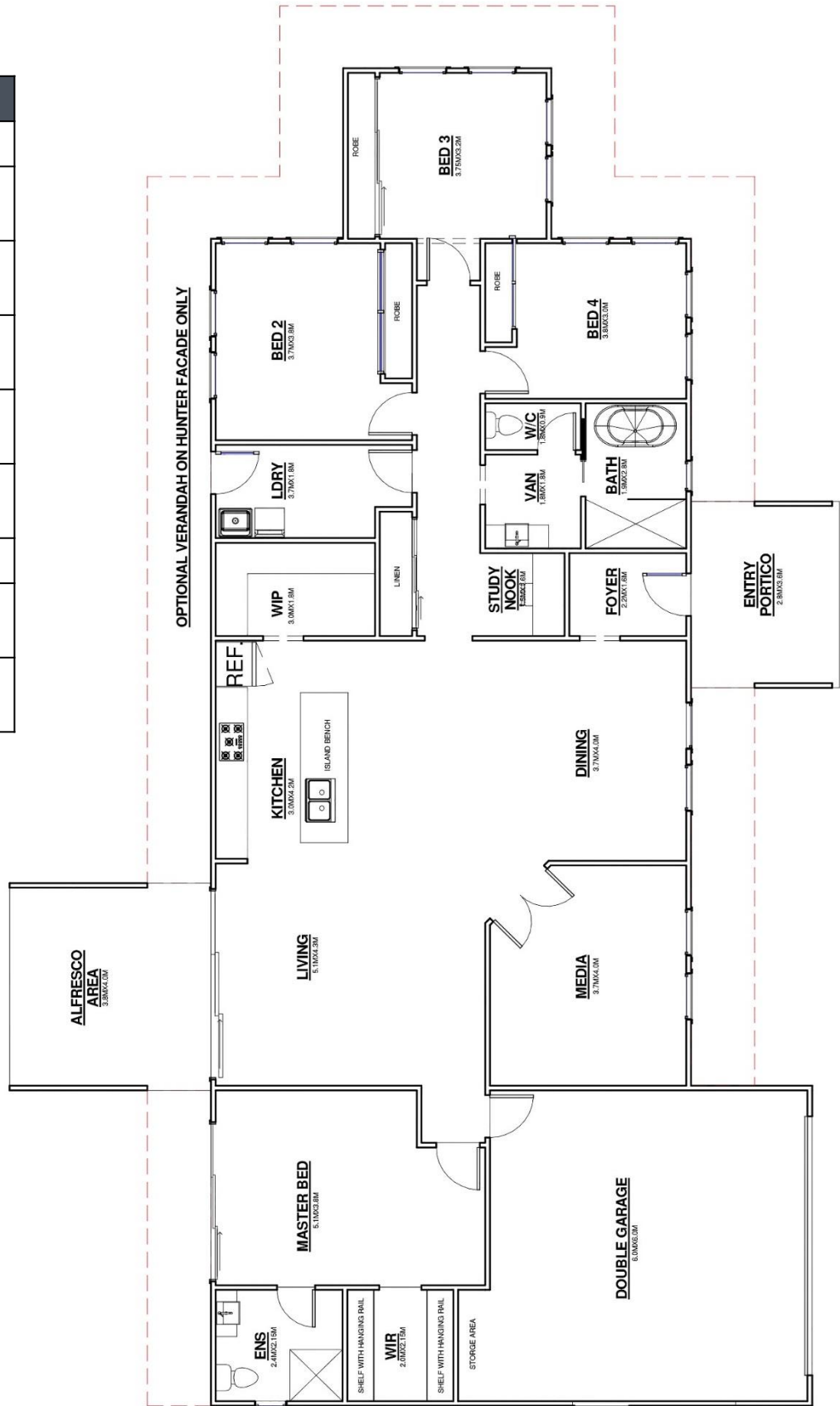
martin PROJECT
HOMES

Peter Wakeman
martinprojecthomes.com
1300 657 487



RADFORD PARK

LOCHINVAR 257	
AREAS	
Living	192.7m ²
Alfresco	15.4m ²
Patio	10.0m ²
Garage	38.6m ²
Total	256.7m²
DIMENSIONS	
Width	25.82m
Length	15.67m



Disclaimer:
 Prices are based on standard site costs/BASIX/work cover requirements. Images shown may depict fixtures, finishes & features not supplied by Martin Project Homes, or included in shown price, as they are for illustrative purposes only. Refer to our standard inclusions list for build inclusions. Optional upgrade packages are available at additional costs. Depicted facade may incur additional charges